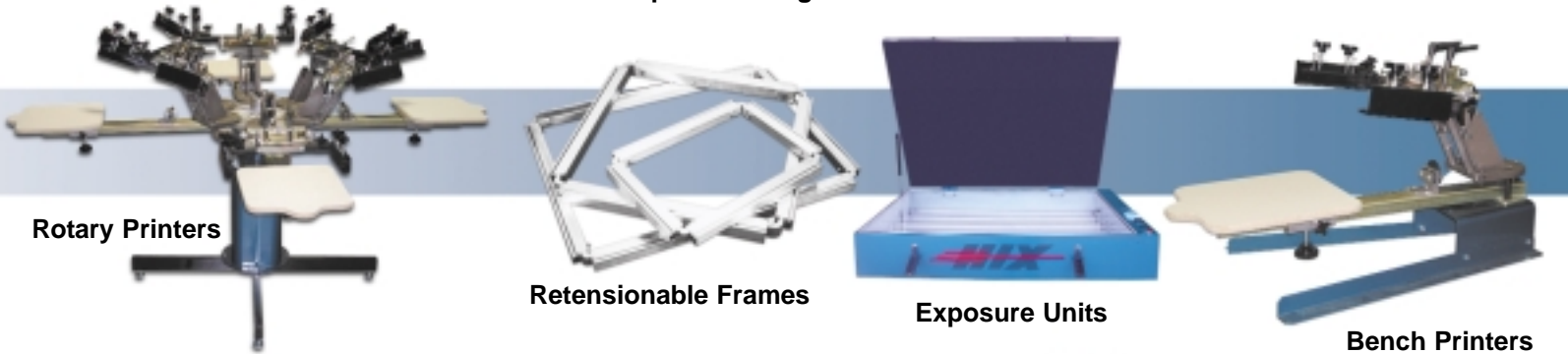


The World Leader In Ovens, Dryers,  
Screenprinting and Food Equipment.



Please Visit our Website for our full-line of products!  
[www.hixcorp.com](http://www.hixcorp.com)  
Made in the U.S.A.

See our **Screenprint Catalog** for more information.



Rotary Printers

Retensionable Frames

Exposure Units

Bench Printers

See our **Dryer Catalog** for more information.



Electric

Gas

Tortilla Press

Pizza Press

Batch Ovens

©2006 HIX Corporation 120106

Heat Transfer and Dryers please visit:  
[www.hixcorp.com](http://www.hixcorp.com)

Dough and Tortilla Presses please visit:  
[www.doughxpress.com](http://www.doughxpress.com)

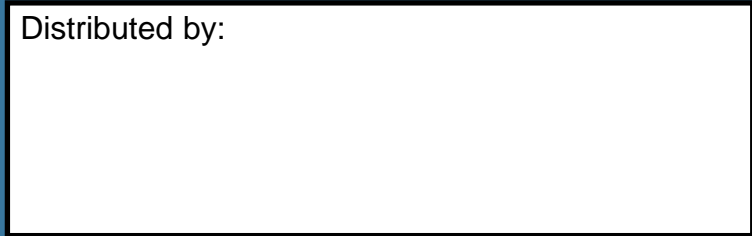
Custom Built Dryers please visit:  
[www.ovens-dryers.com](http://www.ovens-dryers.com)

Flock Transfers please visit:  
[www.ez-transfers.com](http://www.ez-transfers.com)

### HIX Corporation

1201 E. 27th Terrace • Pittsburg, KS 66762  
1-800-835-0606 • 620-231-8568 • Fax: 866-563-4600  
E-Mail: [sales@hixcorp.com](mailto:sales@hixcorp.com) • Web: [www.hixcorp.com](http://www.hixcorp.com)

Distributed by:



January 07

# The World Leader In Heat Press Equipment

Since 1963



[www.hixcorp.com](http://www.hixcorp.com)

From volume applications to small production runs, the HIX line of Clamshell Heat Transfer Machines continue to lead the industry.

HIX Clam Shell Presses have the ability to work with all commercial transfers on the market today. Their rugged construction and dependability makes these presses an asset in any shop. The success of the clam shell design stems from the presses ability to maintain consistent heat and pressure over the surface of the heat element. With demonstrated success transferring puff, foil, hot split, cold peel and sublimation transfers.

## HT-600D & HT-400D Digital

- HT-600D 16"x 20" heavy duty, even heating platen. The HT-400D has a 15"x15" heavy duty, even heating platen.
- Standard in the industry because of its ruggedness, durability, and years of trouble-free performance.
- Digital timer is adjustable up to 999 seconds.
- ETL-US and CE certified.
- Calibrated digital temperature control is adjustable up to 450°F (232°C) and displays the current temp, set temp and time.
- Applies all types of transfers on items up to 1" thick on the HT-400D and 5/8" on the HT-600D.
- Innovative engineered handle design provides increased pressure.
- Lifetime warranty on heating element.

THE Industry Standard



HT-400

### HT-600D:

- 16"x20" Platen (40.6x50.8 cm)
- Box Size 33"x21"x18" (84x53x46 cm)
- Shipping Weight 95 lbs. (44 kg)

- Amps/Watts (120 Volt) 14.5 / 1750
- Amps/Watts (220 Volt) 10 / 2000

### HT-400D:

- 15"x15" Platen (38.1x38.1 cm)
- Box Size 33"x21"x18" (84x53x46 cm)
- Shipping Weight 84 lbs. (39 kg)

- Amps/Watts (120 Volt) 12.5 / 1500
- Amps/Watts (220 Volt) 7.5 / 1560

## Presto®15 & Presto®20 Portable Affordable

- 15" x 15" and 16" x 20" heavy duty, even heating platen.
- Calibrated thermostat that can be set from off to 450°F (232°C).
- Separate digital timer included.
- Repeatable pressure adjustment scale on Presto 15 and a full range pressure adjustment on the Presto 20.
- Sturdy steel design is portable.
- Presto 15 applies transfers 1/8" thick Presto 20 applies transfers 5/8" thick.
- Heat indicating light that turns off once set temperature is reached.
- Easy to open and close handle.
- Lifetime warranty on heating element.



Presto 15

### Presto 15

- 15"x15" Platen (38.1x38.1 cm)
- Box Size 28"x19"x15" (71x48x38 cm)
- Shipping Weight 62 lbs.(29 kg)
- Amps/Watts (120 Volt) 12.5 / 1500
- Amps/Watts (220 Volt) 7.5 / 1560

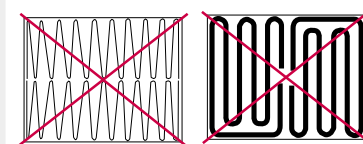
### Presto 20

- 16"x20" Platen (40.6x50.8 cm)
- Box Size 33"x21"x18" (84x53x46 cm)
- Shipping Weight 90 lbs. (41 kg)
- Amps/Watts (120 Volt) 14.5 / 1750
- Amps/Watts (220 Volt) 10 / 2000

For 44 years, HIX heat presses have been known worldwide for precise, even heating, and long lasting **HIX manufactured** heat castings. A copper sheathed heating rod is cast in an aluminum alloy for maximum heat transfer on all of our 15"x15" and 16"x20" presses. These heating rods are comparable to those found in industrial ovens that heat up quickly, work efficiently, and last many years.



HIX Industrial Quality, Copper Sheathed Heating Rod That Is Strategically Cast In Aluminum Alloy



Some manufacturers use "toaster type" winding heat elements. These can have cold spots that occur in each bend of the metal or they are just too thin to properly heat up the casting. Look in your toaster and see where the element does not heat at the bends. Other manufacturers attempt to use two different heat elements. These must be exactly matched for electrical resistance or they will heat differently, causing one side of the casting to be hotter or colder than the other. Some even have crossing points where hot spots can occur.

With HIX's industrial quality heat castings, you get a lifetime warranty and the peace of mind in knowing you have the best machine available that will last for many years to come.



## SwingMan Stand

Please visit us online at [www.hixcorp.com](http://www.hixcorp.com) to view all accessories.

- Made of sturdy 1 1/4" square steel tubing.
- Easily Assembled.
- 4 leveling feet.
- Ships Flat: UPS
- Weight 24 lbs.
- Length 35", Width 26" and Height 32"

(Heat Press Not Included)

## Non-Stick Coated Sheets



- Eliminates scorching on products.
- Keeps transfers from sticking.
- Minimizes ink and dust from transfers and garments.
- Allows user to gang multiple transfers.
- Prevents dyes in colored garments from staining the heat platen.

## Cube & Flat Attachment



- For use with the FH-3000D combo, flat, or cube press.
- 3-1/2" x 3-1/2" Maximum cube area.
- Easily interchangeable.



- For use with the FH-3000D combo, flat, or cube press.
- 3-3/4" x 6-1/4" flat area.
- Easily interchangeable.

## Cap Platens



- For use with the B-250 and B-250D cap transfer machines.
- Don't stretch or wrinkle a cap again.
- Youth 2-3/4"x5-1/4"
- Golf (Standard) 3"x5-1/2"
- Ball 3-3/4"x5-7/8"

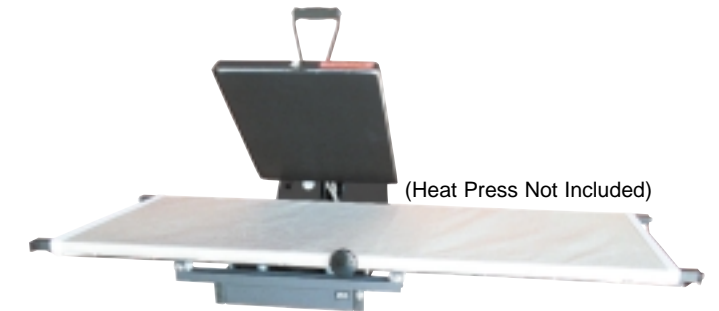
## Non-stick Pad Protector



- Protects rubber pad from wear and stains.
- Increases the life of the rubber pad.
- Allows smooth movement for positioning product and transfer.
- Provides a non-sticking, easily cleaned work surface.

## Shuttle Attachment

- For use with the air automatic N-640D, N-840D, C-600D, or C-800D heat transfer machines.
- Significantly increases the production output by providing two work stations.
- Allows operator to layout the next product while one is still transferring.
- Heavy duty shuttle blanket is constructed of non-stick coated fiberglass.
- Easily mounts into existing holes already drilled into the machine.
- Non-stick coated pad protector required.



(Heat Press Not Included)

## Water Separation Trap



- For use with the air automatic C-600, C-800, N-640D and N-840D heat transfer machines.
- Filters the air and keeps water from entering the machine.
- Helps prolong the life of the machine.

## Other Accessories

- Digital Timer.
- Non-stick Pantyhose Insert.
- Heat Transfer Helper Tape
- Rubber Pad Replacement Kits
- Assembly Cap Blanket Bracket
- R2R Lower Pad Kit
- Mug Accessories:
  - 4" x 12" Non-stick Mug Transfer Sheet.
  - 4" x 12" Silicone Mug Liner 1/16".
  - Silicone Mug Wrap - Standard and Oversized.
  - Mug Liner (for irregular objects)

Visit [www.hixcorp.com](http://www.hixcorp.com) or Call 1-800-835-0606 • Fax 866-563-4600

All specifications subject to change without notice.

# Specialty Presses

Applique  
Tagless  
Cube

HIX has a complete line of specialty Heat Transfer Machines designed for niche applications including paper cubes, rhinestones, nailheads, tagless tees and more!

## HOSS High Output Super Shuttle

The HOSS, High Output Super Shuttle heat transfer machine can produce 600 finished shirts per hour with two operators. Fully automatic, all the operator(s) need to do is load the shirt/transfer on one pallet, it cycles automatically. Then load a shirt/transfer on the other pallet, it cycles automatically and the first pallet returns. Peel the transfer. Repeat the process again. Now you can get the kind of production that will make money!

- Fully Automatic 4 16"x20" Platens
- Digital temperature controls with readout for each heat platen.
- Dual adjustable air pressure controls.
- Adjustable dwell timer to control transfer pressing time.
- Automatic indexing and lower platens move automatically at the end of the press cycle.
- Two (optional 4) adjustable transfer holding shelves.
- One or two person operation.
- Emergency stop switches.
- 60" x 60" Footprint.
- Cycle start and stop switches

- 4 - 16"x20" Platen (40.6x50.8 cm)
- Crate Size 75"x72"x36" (190x183x92 cm)

### 600 Impressions an hour!

#### Production Formula

6 sec. machine cycle  
+ 6 sec.  
transfer time = 12 sec. total  
time per transfer;  
12 sec. per transfer = 5  
transfers per min. x 2 heat  
heads = 10 transfers per  
min. x 60 min. =  
**600 transfers per hour.**

- 380 Volt (10A / 3 Phase)
- 220 Volt (30A / 1 Phase)
- Shipping Weight 830 lbs. (377kg)



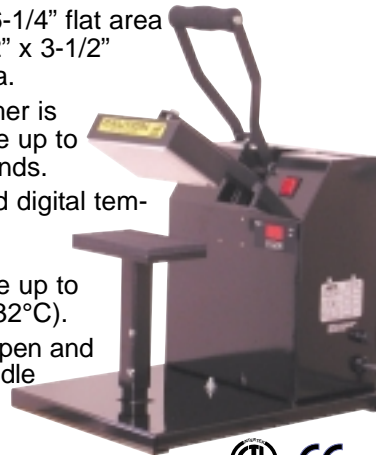
Four 16x20 Alternating Work Stations

## FH-3000D With flat, cube, or both attachments!

Applies all types of transfers to shirt pockets, cubes, labels, sublimation metal/plastic, umbrellas, sleeves, cuffs, collars, bags, aprons, name badges, sport/golf bag tags, ceramic, coasters, gloves, and more!



- 3-3/4" x 6-1/4" flat area and 3-1/2" x 3-1/2" cube area.
- Digital timer is adjustable up to 999 seconds.
- Calibrated digital temperature control is adjustable up to 450°F (232°C).
- Easy to open and close handle with full range pressure adjustment.



ETL CE

Cube Press 3.5"x3.5" Platen Size • Shipping Weight 33 lbs.

### Flat Press

- 3.75"x6.25" Platen (9.5x15.9 cm)
- Box Size 19"x16"x19" (48x41x48 cm)
- Shipping Weight 31 lbs. (15 kg)
- Amps/Watts 4 / 450
- Amps/Watts 2 / 430

## R2R Roll to Roll Label Press

For Tagless/  
Care Label

- **4x5 Standard Heat Platen**- Allows for transfer sizes up to 3.75 x 4.75.
- **Custom Lower Platens**- Easily removed, toolless and interchangeable.
- **Index Reader**- Full range multicolor index reader.
- **Digital Timer**- is adjustable up to 999 seconds, shows countdown on read out.
- **Digital Temperature Control**- is adjustable up to 450°F (232°C) and displays the current temperature.
- **Moveable Edge Guide**- Moveable Edge Guide prevents erratic transfer movement for continuous reading of every label.
- **Safety Guard**- Bumper guard around 3 sides of heat head. Prevents operator injury.
- **Quick Release**- A locking hub for quick change over operations.
- **Air Control**- Fully adjustable pressure range control. At 65 psi creates 700 lbs of clamping force.
- **Web Guide**- Easy feed web guides.
- **Emergency Stop**- Emergency stop doubles as safety stop and power off functions.
- **Manual/Auto Selection**- Drive selection button.
- **Jog Button**- For manually roll transfers during set-up operations.
- **Lighted Power Button**- Illuminated for easy to use operation.



Custom Lower Platen Available



- Box 30"x 20" x 20"
- Shipping Weight 113 lbs. (51 kg)
- 120 volt, 5 amps, 600 watts
- 220 volt, 3 amps, 600 watts

# Automatic Presses

15" x 15" N640D/ C600/ S-450D  
16" x 20" N840D/ C800/ S-650D

Automatic Presses are the Pros Choice for high volume production.

HIX Automatic presses are top of the line. These presses are the most user friendly in the business and are a must in any shop where production, reliability and quality are top priorities.

N-840D & N-640D  
C-800D & C-600D

Air Automatic  
Retail Shop Preferred

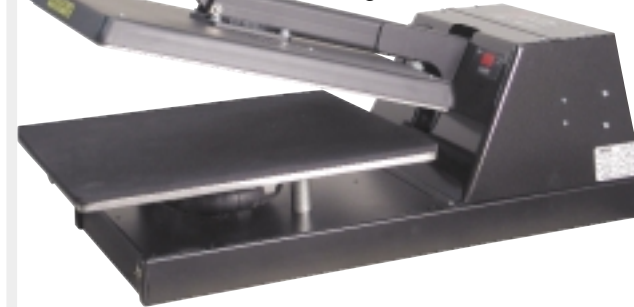
S-650D 16"x20"  
S-450D 15"x15"

Manual Close  
Automatic Open

Perfect for Direct to Garment

- N-840D: 16"x20", N-640D: 15"x15".
- C-800D: 16"x20", C-600D: 15"x15".
- Digital timer is adjustable up to 999 seconds.
- Full adjustable pressure control (pneumatic) Up to 89 PSI of inline pressure.
- Calibrated digital temperature adjustable to 450°F.
- Deep overslip for splitting shirt.
- Lower the handle to start the automatic cycle.
- Gas shock lift system on the N-840D and N-640D.

- Long lasting pneumatic air cylinder lift system on the C-800D and C-600D.
- Applies all types of transfers on items up to 3/8" thick.
- Air compressor and water separation trap required.\*
- ETL-US and CE certified with lifetime warranty on heating element.



\*Water separation trap included with C-800D and C-600D

ETL CE

- N-840D/ C-800D • 16"x20" Platen (40.6x50.8 cm)
- Box Size 41"x20"x15" (104x51x38 cm)
- Shipping Weight 134 lbs. (61 kg)

- Amps/Watts (120v) 14.5 / 1750
- Amps/Watts (220v) 10 / 2000

- N-640D/ C-600D • 15"x15" Platen (38.1x38.1 cm)
- Box Size 41"x20"x15" (104x51x38 cm)
- Shipping Weight 123 lbs. (56kg)

- Amps/Watts (120v) 12.5 / 1500
- Amps/Watts (220v) 7.5 / 1560

### S-650D:

- 16"x20" Platen (40.6x50.8 cm)
- Box Size 33"x21"x18" (84x53x46 cm)
- Shipping Weight 95 lbs. (44 kg)
- Amps/Watts (120 Volt) 14.5 / 1750
- Amps/Watts (220 Volt) 10 / 2000

### S-450D:

- 15"x15" Platen (38.1x38.1 cm)
- Box Size 33"x21"x18" (84x53x46 cm)
- Shipping Weight 84 lbs. (39 kg)
- Amps/Watts (120 Volt) 12.5 / 1500
- Amps/Watts (220 Volt) 7.5 / 1560



NEW for 2007!

Auto OPENS Every Time!

## Hat Press HIX has the finest Hat Press on Today's Market!

### B-250D Available with Youth, Golf, Ball Platen

- 3"x 5-1/2" casting provides even and precise heat.
- Transfer hold down device standard.
- Calibrated digital temperature control is adjustable up to 450°F (232°C).
- Digital timer is adjustable up to 999 seconds.

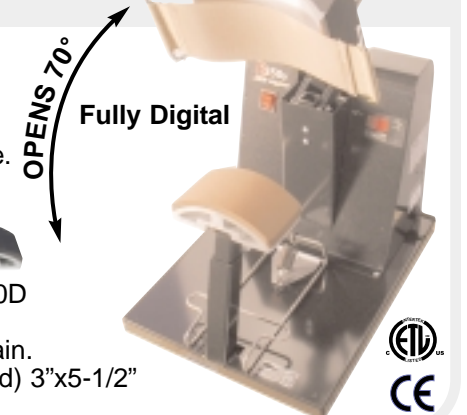
- Easy to open and close handle with full range pressure adjustment.
- Bottom spring device to hold caps in place.
- Sturdy design that is lightweight and portable.

### Cap Platens



- 3"x5.5" Platen (7.6x14 cm)
- Box Size 19"x16"x19" (48x41x48 cm)
- Shipping Weight 31 lbs. (15 kg)
- Amps/Watts (120v) 4 / 450
- Amps/Watts (220v) 2 / 430

- For use with the B-250 and B-250D cap transfer machines.
- Don't stretch or wrinkle a cap again.
- Youth 2-3/4"x5-1/4" Golf (Standard) 3"x5-1/2" Ball 3-3/4"x5-7/8"



ETL CE

# Swing Away Presses

9" x 12" Hobby Lite®  
 15" x 15" Swingman® 15  
 16" x 20" Swingman® 20D and 20D TWIN  
 25" x 25" Swingman® 25D and 25D TWIN

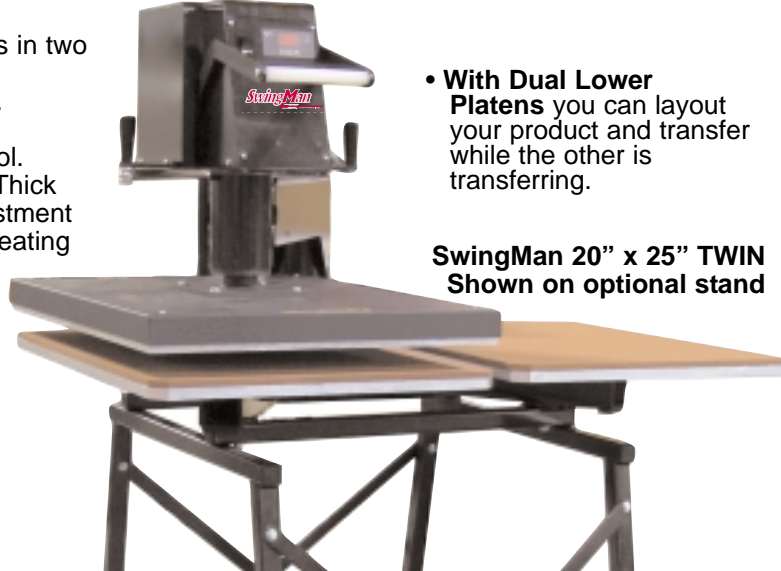
HIX Swing Away Transfer Machines are setting the standard for sublimation application onto tiles, plaques, wood, tees and more!

**SubliPro®** the press *Sublimation Pros* use. Our SubliPro® presses set the standard for sublimation application onto tiles, plaques, glass, mugs as well as T-shirts. Our complete line of swingaway presses allow for items up to 1 3/4" thick. From the small lightweight 9"x12" Hobby Lite to our 20"x25" Single and Dual TWIN for the professional. *HIX SubliPro presses are built to last.* Look for the SubliPro® Label on HIX SwingAway Presses and know you are buying the **BEST**.

**SwingMan® 20D 16"X20"** Both Available in TWIN Dual Platens  
**SwingMan® 25D 20"x25"**



- Four Great Presses in two great sizes.
- SwingAway Platen.
- Digital Time and Temperature Control.
- Items up to 1 3/4" Thick
- Full Pressure Adjustment
- Heavy duty even heating
- **Lifetime warranty** on heating element.



- **With Dual Lower Platens** you can layout your product and transfer while the other is transferring.

SwingMan 20" x 25" TWIN Shown on optional stand

**SAVE Even More!**  
 16"x20" Single Ships UPS

**Single 20D**  
 • 16" x 20" Platen (40.6 x 50.8 cm)  
 • 14.5 Amps 1750 Watts (120v)  
 • Box Dimensions 33" x 21" x 18"  
 • Shipping Weight 108 lbs (49 kgs)

**Single 25D (220v)**  
 • 20" x 25" Platen  
 • 14.5 Amps 1750 Watts  
 • Shipping Weight 135 lbs + Crating

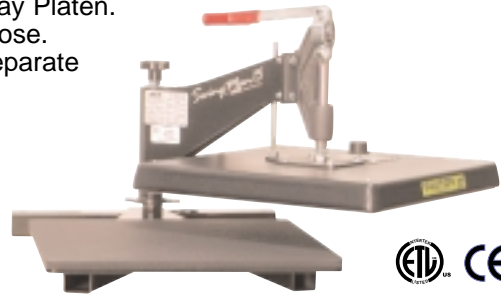
**TWIN 20D (220v)**  
 • Dual 16" x 20" Platen (40.6 x 50.8 cm)  
 • 14.5 Amps 1750 Watts  
 • Shipping Weight 225lbs + Crating

**TWIN 25D (220v)**  
 • Dual 20" x 25" Platen  
 • 14.5 Amps 1750 Watts  
 • Shipping Weight 225lbs + Crating

**SwingMan®15 15"x15"**  
**Hobby Lite® 9"x12"**



- SwingMan 15 Perfect all around press.
- Hobby Lite lightweight hobby press
- Full range pressure adjustment.
- Full Temperature control from OFF to 400°F.
- Full SwingAway Platen.
- Easy open/ close.
- Hands free separate digital timer.



**Hobby Lite**

• 9"x12" Platen (23x30.5 cm)  
 • Box Size 20"x17"x14"  
 (51x43x36 cm)  
 • Shipping weight 29 lbs. (14 kg)

• Amps/Watts (120 Volt) 7 / 850  
 • Amps/Watts (220 Volt) 3.5 / 850

**SwingMan 15**

• 15"x15" Platen (38.1x38.1 cm)  
 • Box Size 28"x19"x15"  
 (71x48x38 cm)  
 • Shipping weight 68 lbs. (31 kg)

• Amps/Watts (120 Volt) 12.5 / 1500  
 • Amps/Watts (220 Volt) 7.5 / 1560



**Sublimation Made Easy**

**What is sublimation?** The process of creating and applying sublimation transfers is very simple.

**Equipment Needed:**

- Heat press capable of pressing items up to 1 3/4" thick.
- Ink jet printer equipped with Piezo Print heads.
- Sublimation Dyes to replace ink in printer.
- High quality paper made for Sublimation.
- Blank Polyester or Poly coated substrate.

**Process:**

1. After creating your artwork, print your transfer onto sublimation paper.
2. Place item on heat press, position transfer on item to be imaged; remember item must be polyester or polyester coated.
3. Heat transfer machine set at 400° F apply medium to firm pressure.
4. The transfer colors "sublimes" into the polyester coating.
5. After the process is complete, the result is a colorful, durable image that is dyed into the product or polyester coating.

# Mug Systems

**Mug**  
 Press Glazer  
 Wraps Ovens

Cutting edge mug transfer technology with new options for quality and production.

## EP-565 Mug Press



- Side mount loader perfect for tall mugs and cylindrical objects.
- Great for Sublimation and Laser Transfers.
- Temperature range to 400 degrees.
- Auto-reset timer that can be set up to 6 minutes.
- Complete wrap design allows coverage on entire surface of the mug up to the handle.
- Generates firm even pressure for perfect image transfer every time.
- Easy to use open/close handle with adjustable pressure.
- Compact, sturdy and portable.
- Heat indicating light.

• Maximum image area 7 1/4" x 3 3/4"

• Box Size 18"x8"x11" (44x19x26 cm)  
 • Shipping weight 19 lbs. (9 kg)

• Amps/Watts (120v) 4 / 480  
 • Amps/Watts (220v) 2.2 / 480



## Mug Ovens and Wraps

Up to 600 Mugs Per Hour

**Mug Wraps**

- Toolless
- Quick Release Clasp

- Handle to Handle Imaging
- Sized for Most Standard 11oz. and 15oz. Mugs

- Custom Sizes Available

Patented Technology  
 #5318924  
 #5755921

The advantage of the HIX wrap is its *innovative toolless clasp technology*. No other mug wrap on the market is as easy to apply or remove. No more fumbling with awkward closing mechanisms.

Image quality is unsurpassed, because the HIX wrap does not have the typical "dead areas" associated with the traditional mug press. You can virtually image **"Handle to Handle"**.



**Mug Ovens**

*HIX Mug ovens and coolers, a perfect combination with the HIX Mug Wrap.*

Finally, a solution you can rely on for creating large quantities of decorative mugs that are clear, crisp and colorful looking. With 44 years of HIX engineered oven technology, you can believe we produce the best!

HIX has two standard mug ovens, and custom sizes are available:

- 2414, a 24" wide by 14' long mug oven system, will process over 200 mugs per hour. Mugs come off the oven through our cooler, which allows for cool easy handling/packaging right off the production line. No messy water quenching.
- 3625, a 36" wide by 25' long oven, will process 600 mugs per hour! A larger, longer, wider belt allows for more wraps and higher production capabilities.

Custom oven systems, with capacities to handle your production needs, are also available. Please call for more information.



## Mug Glazer

- For CLC and photo transfers.
- Cures transfers onto mugs after they have been transferred in a mug press.
- Long lasting heat element, no dangerous breakable bulb heater.
- Makes the mug artwork sharp, colorful, glossy, and smooth.
- Timer and start button.
- On/off switch and heat indicating light.
- Temperature is preset.

• Box Size 11"x9"x7"(28x23x18 cm)  
 • Shipping Weight 6 lbs. (2.7 kg)

• Amps/Watts (120v) 4.5 / 500

• Amps/Watts (220v) 2.5 / 500

